

RESEARCH ARTICLE

Application of benthic foraminifera to determine ecological status of Panvel Creek and adjoining River Estuaries

Kale Purushottam G

Department of Biological Sciences, Ramniranjan Jhunjhunwala College, Ghatkopar (W), Mumbai, 400086.

Email: pgkale@gmail.com

Manuscript details:

Received: 03.05.2017
Accepted: 25.06.2017
Published : 07.07.2017

Editor:

Dr. Arvind Chavhan

Cite this article as:

Kale Purushottam G (2017) Application of benthic foraminifera to determine ecological status of Panvel Creek and adjoining River Estuaries; *International J. of Life Sciences*, 5 (2): 269-276.

Copyright: © 2017 | Author (s), This is an open access article under the terms of the Creative Commons Attribution-Non-Commercial - No Derivs License, which permits use and distribution in any medium, provided the original work is properly cited, the use is non-commercial and no modifications or adaptations are made.

ABSTRACT

Foraminifera, the amoeboid protists, occupy a unique place in the coastal marine ecosystems. These single celled, organisms exist as benthic, planktonic and rarely as terrestrial forms. Their ooze persists in the sediments over prolonged periods. The study of fossil foraminifera is an integral part of paleoceanography, paleoclimology, biostratigraphy. The analysis of foraminifera from sediments and/earth's crusts is routinely done for oil prospecting. The use of foraminifera as bioindicators of coastal environment has also become common.

The comprehensive ecological status was carried out over three years from 2008 to 2010 as a part of EIA project for the proposed site of the International Airport. The study was continued over the subsequent years till 2015. Only a part of the data has been used for this report.

The sediment samples collected from 14 stations across Panvel Creek, Gadhi River estuary and Ulwe River estuary were analyzed for physico-chemical parameters and for qualitative as well as quantitative analysis of macrobenthic fauna. Of the modern (living) forams, those belonging to the family Hauerinidae (6 species) and family Rotaliidae were predominant. It was also noticed that the density of foraminifera was maximum in premonsoon, moderate in monsoon and minimum in post-monsoon season. Moreover, the anthropogenic activities have been taking toll on them and the diversity as well as density was found decrease over last 8 years. The construction of the proposed International airport has not started yet and in coming few years as the development intensifies the ecosystem is bound to degrade further. The diversity and density of foraminiferans can be used as bioindicators in following the degradation of the creek ecosystem and the success of the mitigations efforts, if any, undertaken against this degradation.

Key words: foraminifera, sediments, Panvel Creek, Gadhi River estuary, Ulwe river estuary, bioindicator

INTRODUCTION

The pace of development in India has perceptibly increased over the past few decades. The key role in the development is played by the infrastruc-

-tural facilities like roads, airports and sea-ports. There had been a proposal by the City and Industrial Development Corporation (CIDCO) to construct a new Navi-Mumbai International airport (NMIA), close to Panvel. The NMIA was proposed to cover more than 1600 ha of land, most of which is in possession of the Government. However, a major part of it lies in CRZ area, considered to be an ecosensitive region, figure 1. CIDCO entrusted the EIA studies of the project to the Centre for Environment Studies and Engineering, IIT Mumbai. The author shouldered the responsibility of evaluating the comprehensive ecological status of the region that included Panvel Creek and the adjoining Gadhi River Estuary and Ulwe River Estuary. The report was prepared and submitted to CIDCO in the later months of 2010. The construction of NMIA was to begin immediately after the clearance from MoEF and it was targeted to be commissioned in 2013. Unfortunately there were controversies over certain aspects causing a delay. It was felt that a monitoring of the Brackish water ecosystems to understand how it would get altered during the construction and commissioning of NMIA, so that the study was continued through the subsequent years.

Panvel Creek is named after the city that is spread along its banks. The creek is about 7 km long and connects to Thane Creek. It passes through Taloja, Panvel and Ulwe before meeting the sea at Belapur as seen in figure 2. The creek once used to support pearl fishery along its sandy beaches and was historically the focal point of trade and commerce with Persia. In the recent decades it has been known for the extensive dredging for the commercially significant black sand. It has come into ecologist's attention because of (i) the location in CRZ area, (ii) the need to cut two hills in the area, (iii) the need to reclaim marshlands, thus destroying mangroves over 161 ha and (iv) the need to alter the course of Gadhi slightly and filling of major portion of Ulwe River. The Rivers, particularly, Gadhi River, support a fair biodiversity, though the creek has already been stressed and losing considerable extent of its biodiversity. Among the other components of the biodiversity, it was rather easy to access the diversity of foraminifera and accordingly has been the focal area of the current report.

Extensive surveys, particularly addressing the history of work on foraminifera have been published by Nigam and Khare (1995), Emmanuelle and Scott (2003), Murray (2003) and Bhalla *et al.* (2007).

Ecology of estuaries and the role of foraminifera in the coastal communities has been studied world over (Tietjen, 1969; Scott and Medioli, 1980; Kaladhar *et al.*, 1990; Jayarajan and Reddy, 1995 and 1996; Levy *et al.*, 1993 and 1996; Rajeshwar Rao, 1998; Chaturvedi *et al.*, 2000; Khare and Nigam, 2000; Kamleswara Rao and Srinath, 2002; Emmanuel and Scot, 2003; Nigam, 2005; Woodroffe *et al.* 2005; Bhalla *et ai.* 2007; Rajeshwar Rao *et al.*, 2010 and Gandhi *et al.* 2013). The distribution of species of foraminifera (Kumar *et al.*, 1996; Kathal *et al.* 2000; Nigam *et al.* 2000; Sinha *et al.*, 2000; Gandhi *et al.* 2002; Mazumdar *et al.* 2003) and their taxonomy/ phylogeny (Loeblich and Tappan, 1988; Vergara *et al.* 1997; Murray, 2003; Pawlowski *et al.*, 2013) has also been studied extensively. The uses of foraminiferal microfossils in prospecting for oil, (Boardman,*et al.*,1987; Jones, 1996), paleoclimology and paleoceanography (Zachos *et al.*, 2001) and as bioindicators (Naidu *et al.*, 1984; Yanko *et al.*, 1999) have been reported. The current report is exploring the possibility of using the diversity and abundance of modern benthic foraminifera to indicate the ecological status of the coastal wetlands.

MATERIALS AND METHODS

A total of 21 collection stations were established along the course of Panvel Creek and the Gadhi as well as Ulwe River Estuaries connected to it. These stations were visited using a mechanized boat on the 8th lunar day, during high tide in the peak pre-monsoon, monsoon and post-monsoon seasons. The parameters like depth, temperature, turbidity, TSS, TDS, DO, concentration of nutrients, etc. were recorded at each station. The sediment samples were collected using Petersen's grab. These samples were immediately divided into two parts, from which one part was stained using Rose Bengal and formalin, (Teitjen, 1969) for the study of meso- and macro-benthos. On pre-weighed glass slides, the sediment samples were smeared and these were weighed again so as to determine the weight of sediments. The slides were eventually examined under the compound light microscope to record the species of foraminifera and also the total number of foraminifera per gram of fresh sediments. The other part was further divided in to two portions, one was air dried in the laboratory for analysis of texture, organic carbon as well as nutrient contents and the remaining was analyzed for determining moisture content, water holding capacity

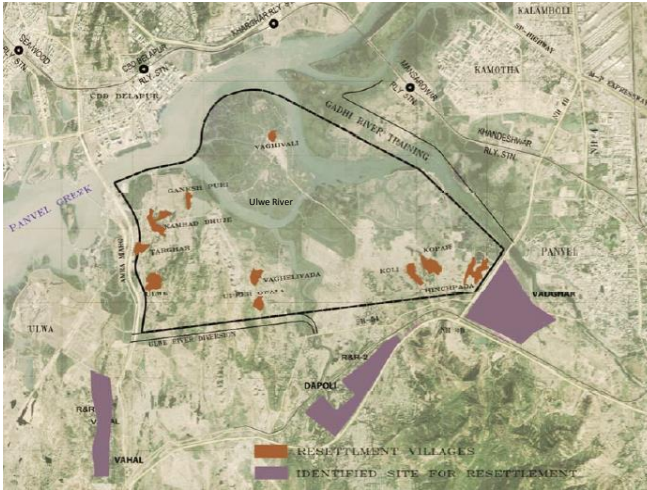


Fig. 1: The proposed site of the Navi Mumbai International Airport (NMIA)



Fig. 2: Satellite image showing Panvel Creek (source- Google maps)

pH, and inorganic nutrients, using standard methods described by APHA (1981) Trivedi and Goel, (1986) and Loring and Rantala (1992). The organic carbon contents were analyzed from the oven dried samples (at 70°C) using Walkley and Black rapid titration method (Trivedi *et al.*, 1987). The texture was studied using The species of benthic, modern, living, foraminifera encountered throughout the seasons were recorded and so was their number per gram of wet, fresh sediments. The records of the successive years from 2008 to 2015 have been considered in the present analysis.

RESULTS AND DISCUSSION

The results pertaining to the studies as described above have been displayed in tables numbered 1 and 2 while the figures 3 and 4 have been given as the support to classification of foraminiferal specimens. The orders Hauerinidae and Rotaliidae are equally represented by the species. Though the data on abundance of individual species has not been presented here, the *Ammonia beccarii* and *Ammonia tepida* of Rotaliidae have been most abundant. Also, it is worth to mention that the total number of foraminiferal species has been maximum in pre-monsoon, moderate in monsoon and minimum in post-monsoon season in all subsequent years.

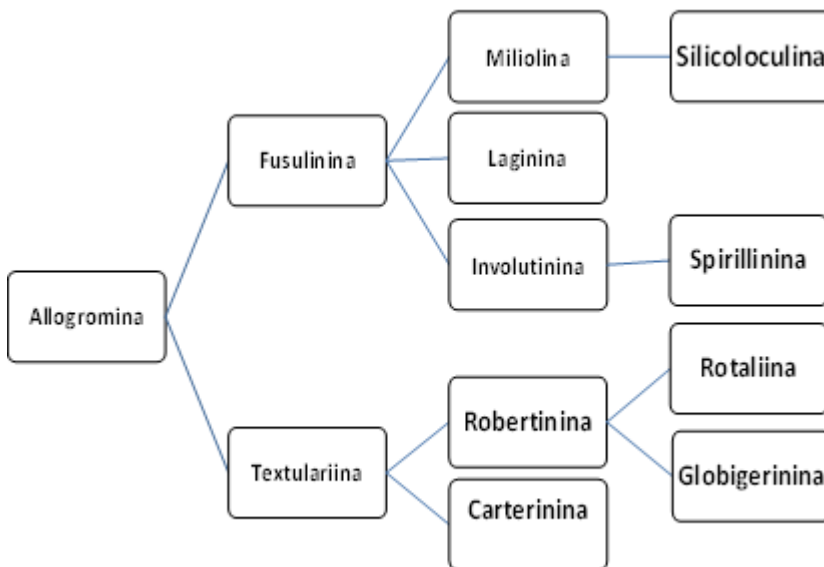


Fig. 3: Foraminiferal Suborders as described by Loeblich and Tappans, 1988. Of these suborders, only Fusulinina are extinct.

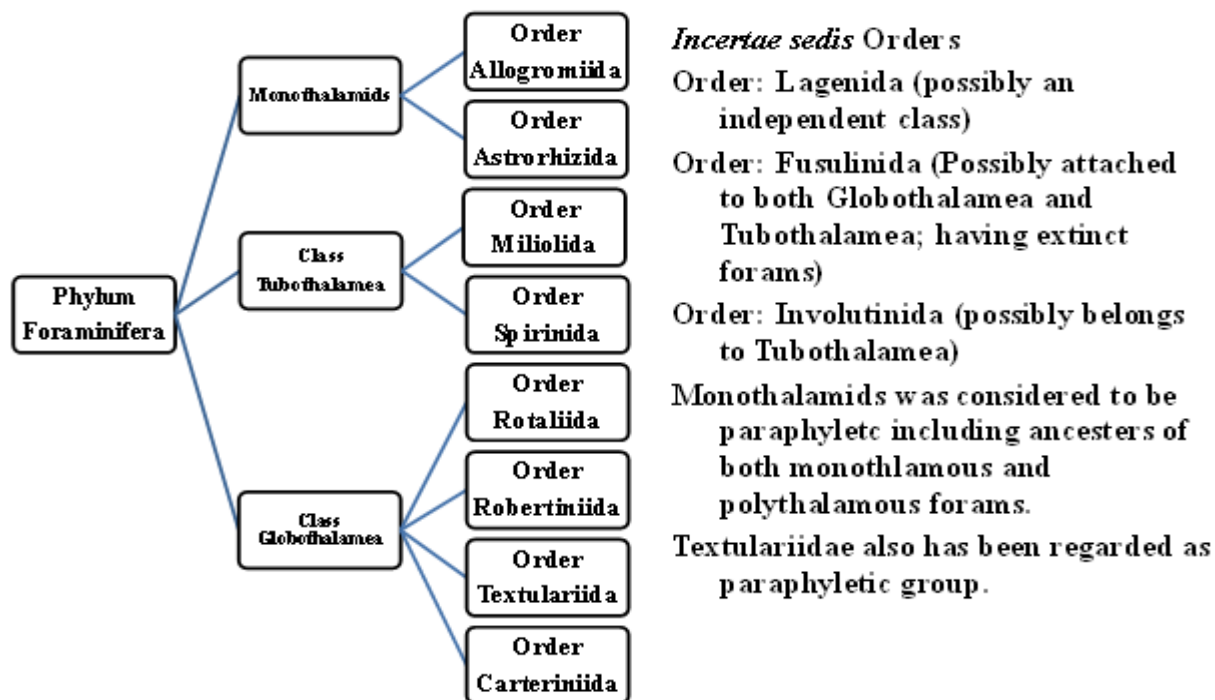


Fig. 4: Most Recent Classification of Forams based on Molecular Phylogeny by Pawlowski et al., (2013)

Table 1: Living Foraminifera in the sediments of Panvel Creek between 2008 and 2015

S. N.	Foraminifera Species	Scientist	Order
1	Textularia conica	d'Orbigny, 1839	Textulariida
2	Spiroloculina communis	Cushman & Todd, 1944	Hauerinidae
3	S. Orbis	Cushman, 1921	Hauerinidae
4	S. antillarum aeva	Cushman, 1932	Hauerinidae
5	Quinqueloculina vulgaris	d'Orbigny, 1826	Hauerinidae
6	Q. lamarkiana	d'Orbigny, 1839	Hauerinidae
7	Q. Seminulum	Linnaeus, 1758	Hauerinidae
8	Triloculina insignis	Brady, 1881	Hauerinidae
9	T. trigonula	Lamarck, 1804	Hauerinidae
10	Eponides repandus	Fichtel & Moll, 1798	Eponididae
11	Cibicides refulgens	de Montfort, 1808	Cibicidae
12	Hanzwaia nitidula	Hanzwa, 1944	Gavelinellidae
13	H. asterizans	Hanzwa, 1944	Gavelinellidae
14	Ammonia beccarii	Linnaeus, 1758	Rotaliidae
15	A. tepida	Cushman, 1926	Rotaliidae
16	A. dentata	Parker and Jones, 1866	Rotaliidae
17	Pararotalia minuta	Takayanagi, 1955	Rotaliidae
18	P. nipponica	Asano, 1936	Rotaliidae
19	P. calcar	d'Orbigny, 1839	Rotaliidae
20	Bulimina costata	d'Orbigny, 1852	Rotaliidae
21	Asterorotalia dentata	Parker and Jones, 1866	Rotaliidae
22	Elphidium crispum	Linnaeus, 1758	Elphididae
23	E. discodale	d'Orbigny, 1839	Elphididae

Table 2: Foraminiferan species encountered in sediments of Panvel Creek between 2008 and 2015

S. N.	Foraminifera Species	2008	2009	2010	2011	2012	2013	2014	2015
1	Textularia conica	√	√	√	√	√	√	√	√
2	Spiroloculina communis	√	√	-	-	-	-	-	-
3	S. Orbis	√	√	√	√	√	√	√	√
4	S. antillarum aeva	-	√	-	√	√	-	-	-
5	Quinqueloculina vulgaris	√	√	√	√	√	√	√	√
6	Q. lamarkiana	√	√	√	-	√	√	√	-
7	Q. Seminulum	√	√	√	√	√	√	√	√
8	Triloculina insignis	√	√	-	-	-	-	-	-
9	T. trigonula	√	√	√	√	√	√	√	√
10	Eponides repandus	√	-	√	√	√	√	√	-
11	Cibicides refulgens	-	√	-	-	-	-	-	-
12	Hanzwaia nitidula	√	√	√	-	√	√	√	√
13	H. asterizans	√	√	√	√	√	-	-	-
14	Ammonia beccarii	√	√	√	√	√	√	√	√
15	A. tepida	√	√	√	√	-	-	√	-
16	A. dentata	√	√	√	-	-	-	-	-
17	Pararotalia minuta	√	√	√	√	√	√	√	√
18	P. nipponica	√	√	√	√	-	-	-	-
19	P. calcar	√	-	-	-	-	-	√	-
20	Bulimina costata	√	√	√	√	√	√	√	√
21	Asterorotalia dentata	√	√	√	√	-	-	-	-
22	Elphidium crispum	√	√	√	√	√	√	√	√
23	E. discodale	√	-	-	√	√	-	-	-
Total number of species		21	20	17	16	15	12	14	10

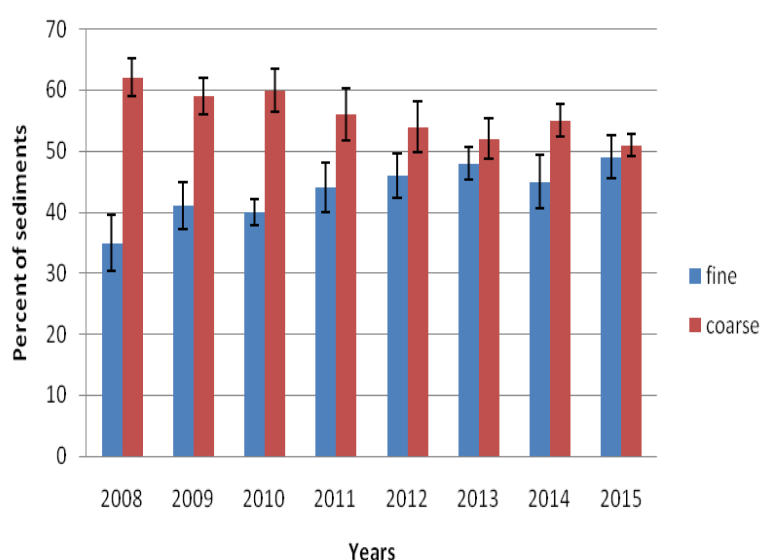


Fig. 5: Change in the texture of Sediments

The data on change in the sediment texture has been depicted in figure 5. As is evident from the figure, the sediment texture has become finer in the subsequent years. The figures 6 and 7 indicate the change in the number of species and the change in the total number of foraminiferal species per gram of the fresh sediments respectively. As is evident from these figures, there has been a steady decrease in both, the number of species or diversity of foraminifera and their abundance or total number per gram of sediments. Yanko *et al.* (1999) have reported that reduction in diversity as well as abundance of foraminifera is indicative of the pollution stress. Saraswat *et al.* (2004) have also found a similar shift in response to pollution.

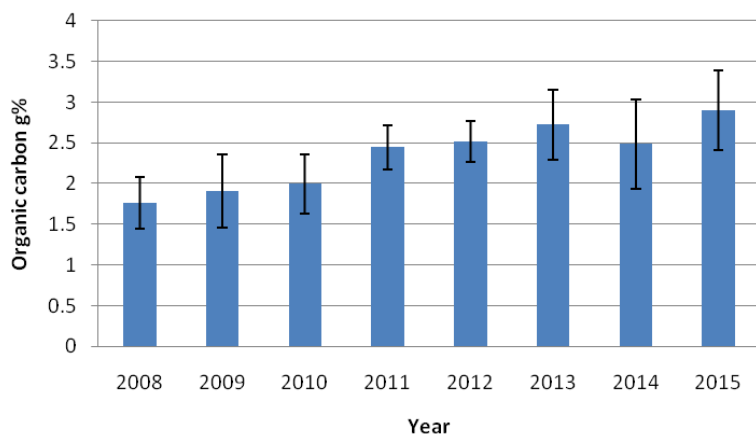


Fig. 6: Change in the organic carbon in the sediments of Panvel Creek during the period of study

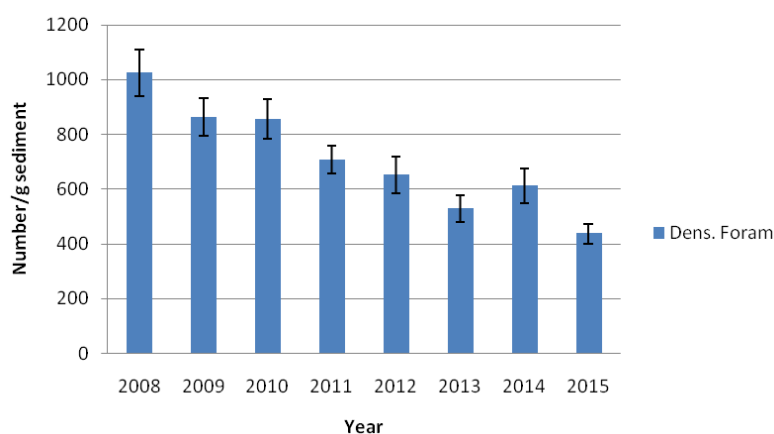


Fig. 7: Change in the number of foraminifera per gram of fresh sediments

The continuous disturbance in the sediments has taken its toll on foraminiferal populations that have thinned out and some species are disappearing from the sediments altogether. The effect of dissolved oxygen on foraminifera has been studied by Mazumdar *et al.* (2003) and Pancho *et al.* (2005 and 2006), are in support of the assumption that reduction in dissolved oxygen is a factor in decline in variety as well as abundance of benthic foraminifera in the Creek as well as Estuaries under study. The increase in temperature of waters is yet another outcome of the anthropogenic activities. Nigam and Caron (2000) have studied the effect of increase in temperature on the reproduction and thus perpetuation of foraminifera. They have reported an inverse proportion between temperature and reproductive potential of foraminifera, thus providing yet another cause for the decline in diversity as well as density of foraminiferal fauna in the study area. Acidification of waters reduces the precipitation

of calcium carbonate and may therefore reduce the variety and abundance of foraminifera (Manivannan *et al.*, 1996). Increase in the volume of domestic sewage reduces the pH of water and sediments and reduces the salinity so that the reduction in diversity and density of forams can be explained (Nigam *et al.*, 2006).

Though the extensive construction activity of NMIA is yet to begin, the blasting and stone quarrying in the hills being cut has been going on even before the study was undertaken. It has resulted in dust pollution and the fine airborne particles eventually find their way into the Gadhi and Ulwe River Estuaries, Creeklets as well as Panvel Creek, which explains the increase in finer particles in the sediments. The increasing urbanization along the banks of the waterways is responsible in release of sewage, domestic waste as well as untreated silage which is causing an increase, not only in the finer sediments but also in organic carbon contents of the sediments, besides reducing the dissolved oxygen contents of the bottom waters. The adverse effects of siltation have been reported by Ghose (1989), Ghimre and Uprety (1990) and Yanko *et al.* (1999). The Creek has been well known for its good quality black sand that is in increasing demand to satisfy the exploding construction activities in suburbs of Navi Mumbai and Panvel. The sand dredging has been going on extensively and has already made the waters turbulent and black.

CONCLUSION

The quality and quantity of foraminifera in the sediments, of not only Panvel Creek and adjoining Estuaries but all coastal water bodies can certainly be used as a reliable bioindicator of the ecological status. As suggested by NIO (2008), continuous monitoring of water bodies for diversity and abundance of foraminifera can yield valuable information on

ecological state of water bodies so that the restoration measures or their efficacy can be easily determined.

Conflicts of interest: The authors stated that no conflicts of interest.

REFERENCES

- APHA AWWA and WPCF, 1981. American Public Health Association, American Water Works Association and Water Pollution Control Federation for International Standard Methods for the examination of water and waste water 18th edition, Washington D.C., 874 pp.
- Bhalla SN, Khare N, Shanmukha DH and Henriques PJ (2007) Foraminiferal studies in nearshore regions of western coast of India and Laccadives islands: A review. *Ind. J. Mar. Sci.* 36(4): 272-287
- Boardman RS, Cheetham AH and Rowell AJ (1987). Fossil Invertebrates. Wiley. ISBN 0865423024
- Boyd, S.E., Limpenny, D.S., Rees, H.L. and Cooper, K.M., 2005. The effects of marine sand and gravel extraction on the macrobenthos at a commercial dredging site *ICES Journal of Marine Science* 62(2):145-162.
- CESE, IIT Mumbai, City and Industrial Development Corporation. Government of Maharashtra. *Environmental Impact Assessment (EIA) - Study of Navi Mumbai International Airport*. Mumbai, June 2010. Print. http://www.indiaenvironmentportal.org.in/files/navi_mumbai I-III
- Chaturvedi SK, Nigam R, Khare N (2000) Ecological response of foraminiferal component in the sediments of Kharo Creek, Kachchh (Gujarat), west coast of India. *Proc XVI Ind Colloq Micropal Strat, Goa*, ONGC Bull 37(2):55-64
- Emmanuelle J and Scott DB (2003) Illustration of Modern Benthic Foraminifera from Bermuda and Remarks on Distribution in Other Subtropical/tropical Areas. *Palaeontologia Electronica* 6(4):29pp, 2.1MB; http://palaeo-electronica.org/paleo/2003_1/benthic/issue1_03.htm
- Gandhi S, Rajamanickam GV, Nigam R (2002) Taxonomy distribution of benthic foraminifera from the sediments of Palk Strait, Tamil Nadu, east coast of India. *J Pal Soc India* 47:47-64
- Gandhi MS, Rajeshwar Rao N, Raja M and Kasilingam K. (2013) Environmental conditions off Karaikal, south-east coast of India, as deciphered from recent benthic foraminiferal distribution. *J. Environ. Earth Sci.* 13 ISSN 2224-3216 (Paper) ISSN 2225-0948 (Online) Vol.3, No.13, 2013 assessed on 17.05.2016.
- Ghimire GPS and Uprety BK (1990) Causes and effects of siltation on the environment of Nepal. *The Environmentalist* 10: 55-65.
- Ghose, M.K., 1989. Land reclamation and protection of environment from the effect of coal mining operation. *Mine- tech* 10 (5), 35- 39.
- Jayaraju N and Reddy KR (1995) Foraminiferal ecosystem in relation to coastal and estuarine sediments of Kovalam-Tuticorin, South India. *J Geol Soc India* 46:565-573
- Jayaraju N and Reddy KR (1996) 528 Factor analysis of benthic foraminifera from coastal and estuarine sediments of Kovalam-Tuticorin, South India. *J Geol Soc India* 48:309-318
- Jones RW (1996) *Micropalaeontology in petroleum exploration*. Clarendon Press. ISBN 978-0-19-854091-5.
- Kaladhar R, Kamlakaran S, Varma KU and Bhaskara Rao (1990) Recent foraminifera from the Near shore shelf, South of Visakapatnam, east coast of India. *J. Geol. Soc. India* 35: 163-172
- Kameswara Rao K and Srinath M (2002) Foraminifera from beach sands along Saurashtra coast, north-west India. *J. Mar. Biol. Ass. India* 44(1&2): 22-36
- Kathal PK and Bhalla SN (1998) Taxonomy and palaeolatitudinal significance of *Rotorboides granulosum* - A less known Recent foraminifera of tropical region. *J Geol Soc India* 51:799-802
- Kathal PK, Bhalla SN, Nigam R (2000) Foraminiferal affinities of the west and east coasts of India: An approach through cluster analysis and comparison of taxonomical, environmental and ecological parameters of Recent foraminiferal thanatotopes. *ONGC Bull* 37:65-75
- Khare N and Nigam R (2000) Laboratory experiment to record rate of movement of cultured benthic foraminifera. *Proc XVI Ind Colloq Micropal Strat, Goa*, *ONGC Bull* 37(1):53-61
- Khare N and Nigam R (2006) Can the possibility of some linkage of monsoonal precipitation with solar variability be ignored? Indications from the foraminiferal proxy records. *Curr Sci* 90(12):1685-1688
- Kumar V, Manivannan V and Ragothaman V (1996) Spatial and temporal variations in foraminiferal abundance and their relation to substrate characteristics in Palk Bay off Rameshwaram, Tamil Nadu. In *Proc. XV Indian Colloq. Micropal. & Strigr, Dehradun*, Pandey J, Azmi RJ, Bhandari A and Dave A, eds. Pp 367-379
- Levy A, Mathieu R, Poignant A, Rosset-Moulinier M, Ambroise D (1996) Foraminifères benthiques des îles Maldives (océan Indien). *Mem Geol Soc France* 169:129-138
- Levy A, Mathieu R, Poignant A, Rosset-Moulinier M, Ubaldo M de L, Ambroise (1993) Recent foraminifera from the continental margin of Portugal. *Micropal* 39:75-87
- Loeblich AR and Tappan H (1988) Foraminiferal genera and their classification (2 vol. xi + 970 pp; xi + 213 pp + 847 plates. New York, Van Nostrand Reinhold; London. Chapman and Hall. ISBN 0442 259379
- Loring LH and Rantala RTT (1992) Manual for the geochemical analyses of marine sediments and suspended particulate matter. *Earth Sci Rev* 32:235-283
- Manivannan V, Kumar V, Ragothaman V, Hussain SM (1996) Calcium carbonate - A major factor in controlling foraminiferal population in the Gulf of Mannar, off Tuticorin, Tamil Nadu. *Proc XV Ind Colloq Micropal Strat, Dehra Dun*: 381-385
- Mazumder A, Henriques PJ, Nigam R (2003) Distribution of benthic foraminifera within oxygen minimum zone, off central west coast, India. *Gond Geol Mag*, Spl 6:5-10

- Muhammad AA, Maah MJ and Yusoff I, Wajid A and Mahmood K (2011) Sand mining effects, causes and concerns: A case study from Bestari Jaya, Selangor, Peninsular Malaysia., Scientific Research and Essays. 6(6), pp. 1216-1231.
- Murray, J., 2003. An illustrated guide to the benthic foraminifera of the Hebridean shelf, west of Scotland, with notes on their mode of life. *Palaeontologia Electronica* 5(1):31pp, 1.4MB; http://palaeo-electronica.org/paleo/2002_2/guide/issue2_02.htm
- Naidu TV, Chandrasekara Rao D and Subba Rao M (1984) Foraminifera as pollution indicator in the Visakhapatnam harbor complex, east coast of India. *Bull. Geol. Min. Met. Soc. India* 52: 88-96
- Nigam R (2005) Addressing environmental issues through foraminifera? Case studies from the Arabian Sea. *J Pal Soc India* 50(2):25-36
- Nigam R (2006) Foraminifera (marine microfossils) as an additional tool for archaeologists? Examples from the Arabian Sea, Glimpses of Marine Archaeology in India. *Proc VII Conf Mar Archaeol Ind Ocean Countries*:94-99
- Nigam R and Caron DA (2000) Does temperature affect dimorphic reproduction in benthic foraminifera. A culture experiment on *Rosalina leei*. *Curr Sci* 78(8):1105-1106
- Nigam R and Chaturvedi SK (2000) Foraminiferal study from Kharo Creek, Kachchh (Gujarat), north-west coast of India. *Ind J Mar Sci* 29:133- 138
- Nigam R and Khare N (1995) Recent foraminifera along west coast of India: Retrospect, Perspect and Prospect. *J. Ind. Acad. Geosci.* 38(2): 7-24
- Nigam R, Khare N and Mayenkar DN (2000) Can bathymetry be a discriminatory factor for the distribution of benthic foraminiferal morpho-groups in modern marine sediments? *Proc XVI Ind Colloq Micropal Strat, Goa, ONGC Bull* 37(1):47-51
- Nigam R, Nayak GN and Naik S (2002) Does mining pollution affect foraminiferal distribution in Mandovi Estuary, Goa, India? *Revue de Paleobiol* 21(2):673-677
- Nigam R, Panchang R and Banerjee P (2005) Foraminifera in surface sediments of Mandovi River Estuary: Indicators for mining pollution and high sea stand in Goa, India. *J Coast Res* 21(4):853-859
- Nigam R, Saraswat R and Kurtarkar SR (2006) Laboratory experiment to study the effect of salinity variations on benthic foraminiferal species - *Pararotalia nipponica* (Asano). *J Geol Soc India* 67(1):41-46
- NIO (2008) Monitoring of coastal Marine and estuarine ecology of Maharashtra, Sponsored Project by MPCB, Mumbai, India by National institute of Oceanography Mumbai p.12.
- Panchang R, Nigam R, Baig N and Nayak GN (2005) A foraminiferal testimony for the reduced adverse effects of mining in Zuari Estuary, Goa. *Int J Environ Studies* 62(5):579-591
- Panchang R, Nigam R, Linshy V, Rana SS and Ingole BS (2006) Effect of oxygen manipulations on benthic foraminifera: A preliminary experiment. *Ind J Mar Sci* 35(3):235-239
- Rajeshwara Rao N (1998) Recent foraminifera from inner shelf sediments of the Bay of Bengal, off Karikkattukuppam, near Madras, South India. PhD thesis, Univ. Madras, Chennai, India
- Rajeshwara Rao N, Geetha C, Muthusamy S and Shanmugavel S (2010) Recent benthic foraminifera from diverse ecological settings in and around Tuticorin, southeast coast of India. *Tamilnadu. Gond Geol Mag, Spl* 25(1): 10 p
- Saraswat R, Kurtarkar SR, Mazumder A and Nigam R (2004) Foraminifera as indicators of marine pollution: A culture experiment with *Rosalina leei*. *Mar Poll Bull* 48(1-2):91-96
- Scott DB and Medioli FS (1980) Quantitative studies of marsh foraminiferal distributions in Nova Scotia and comparison with those in other parts of the world: Implications for sea level studies. *Cush Found Foram Res, Spec Publ* 17:1-58
- Sen Gupta BK (1999) Systematics of modern foraminifera. In *Modern Foraminifera*, Sen Gupta BK ed. Academic Publi., Great Briton pp 7-36
- Sinha R, Nigam R, Khare N, Ingole BS and Ghosh DN (2000) Preliminary report on the study of benthic foraminiferal content in the marine sediment of Queen Maud Land Shelf, Lazarev Sea, Antarctica. *Proc XVI Ind Colloq Micropal Strat, Goa, ONGC Bull* 37(2):49-53
- Tietjen JH (1969) The ecology of shallow water meiofauna in two New England estuaries *Oecologia*, 2: 201-291
- Trivedi RK and Goel PK (1986) Chemical and biological methods for water pollution studies, Environment Publ., Karad, India- p 122.
- Vegara L, Rodriquez G and Martinez I (1997) Agglutinated foraminifera and sequence stratigraphy from Chipaque formation (Upper Cretaceous) of El Crucero Section, Columbia, South America. *Micropaleo.* 43(2): 185-201. DOI 10.2307/1485781
- Woodroffe SA, Horton BP, Larcombe P and Whittaker JE (2005) Intertidal mangrove foraminifera from the central Great Barrier Reef shelf, Australia: implications for sea-level reconstruction. *Journal of Foraminiferal Research* 35(3):23pp DOI: 10.2113/35.3.259 Published on July 2005, First Published on July 08, 2005
- Yanko U, Arnold AJ, and Parkar WC (1999) Effects of marine pollution. In *Systematics of modern foraminifera*, Sengupta B. K. ed. Academic Publ., Great Briton.
- Zachos JC, Pagani M, Sloan L, Thomas E and Billups K (2001). Trends, Rhythms, and Aberrations in Global Climate, 65 Ma to Present. *Science* 292 (5517): 686-693. Bibcode:2001Sci...292..686Z. doi:10.1126/science.1059412. PMID 11326091.